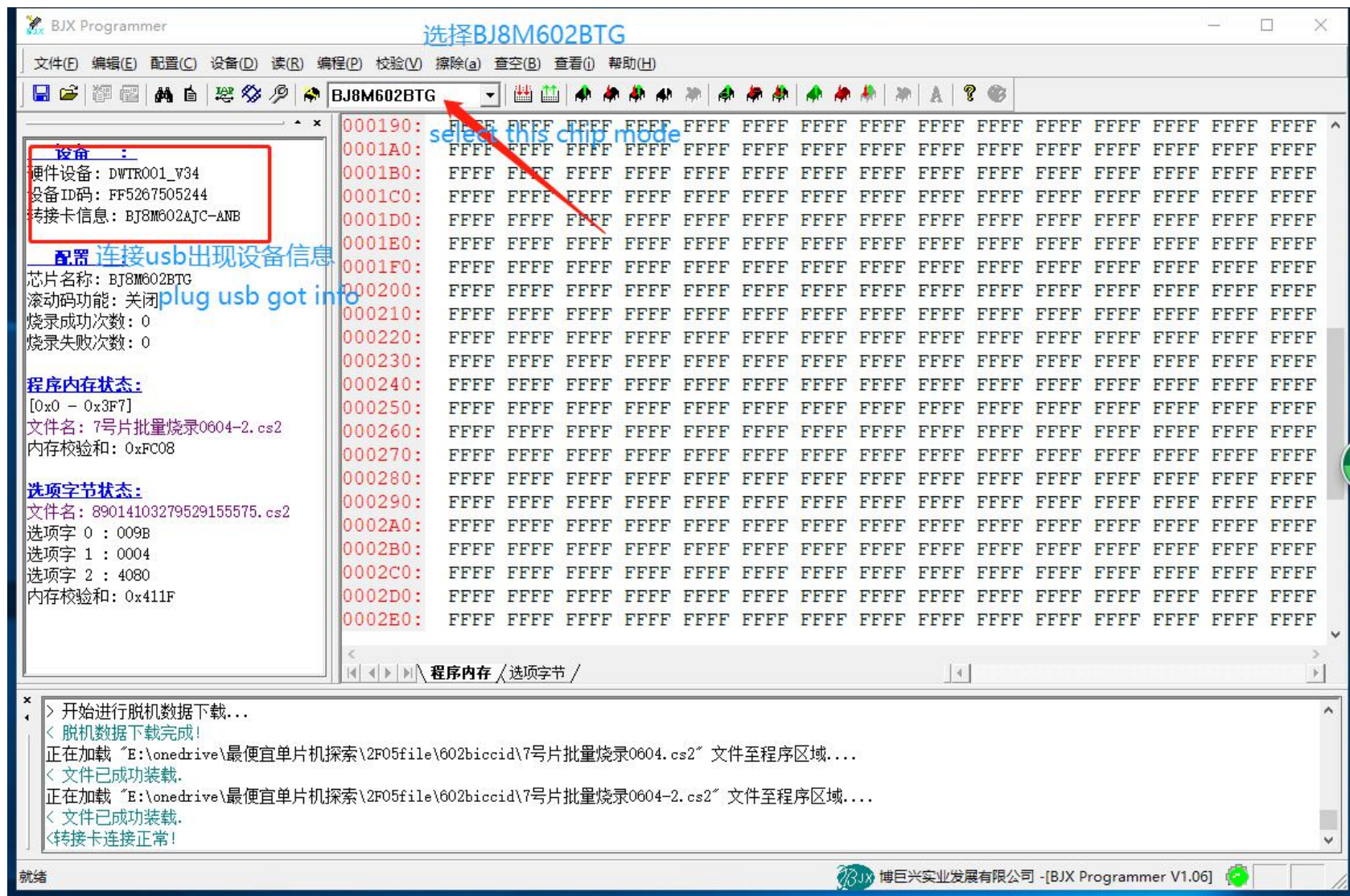


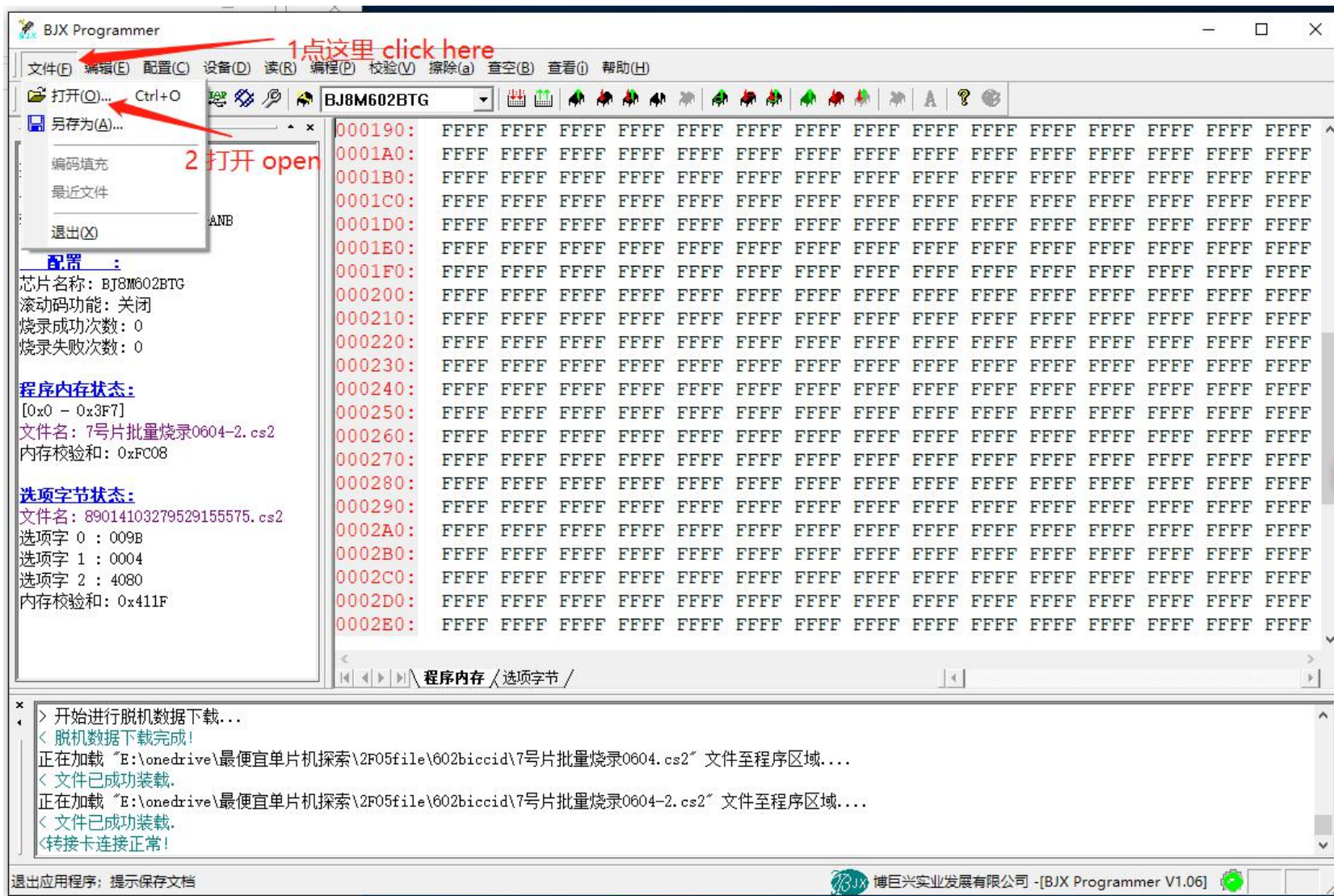
Heicarsim LITE programmer

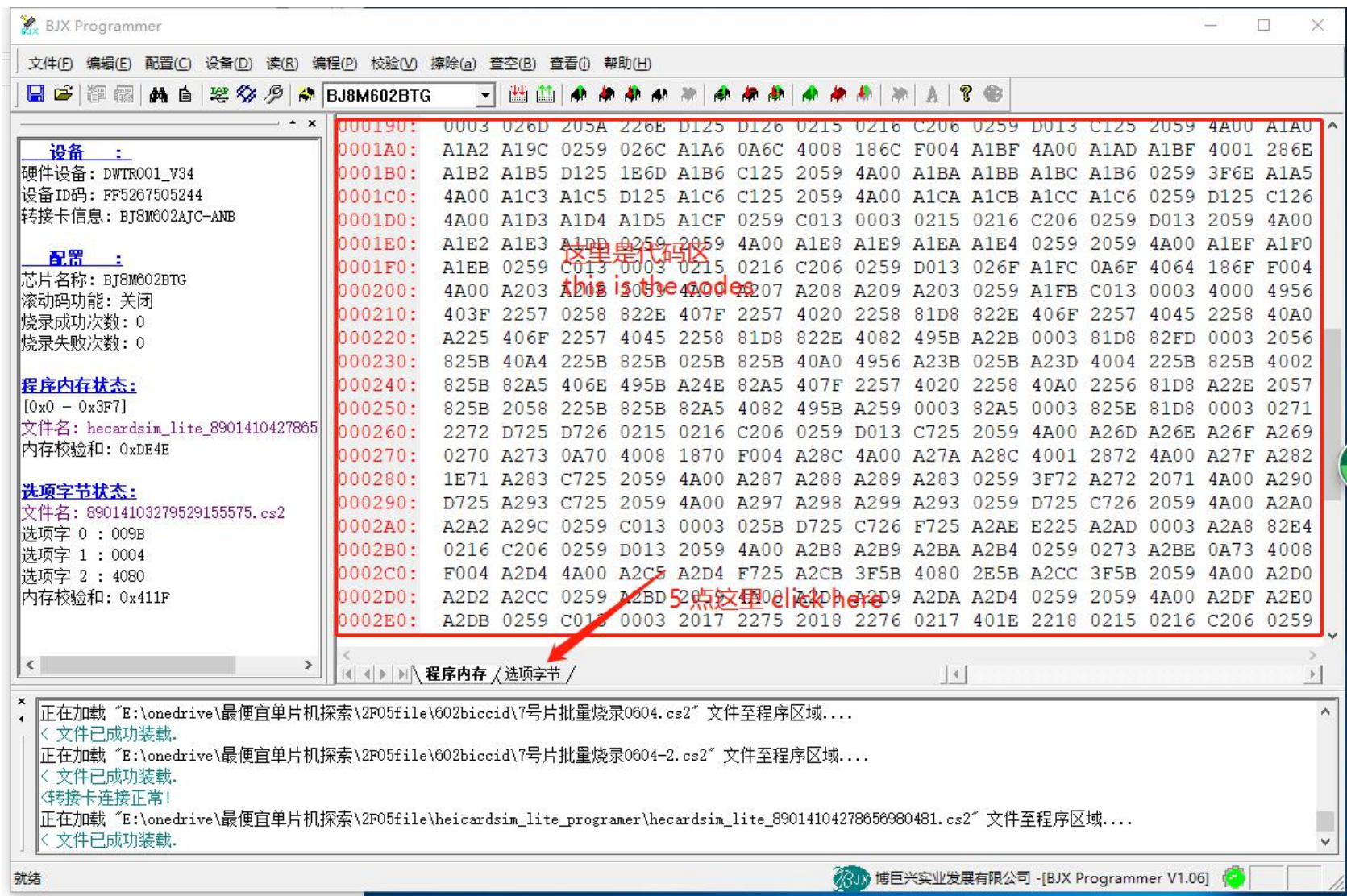
Heicardsim lite 卡贴编程教程

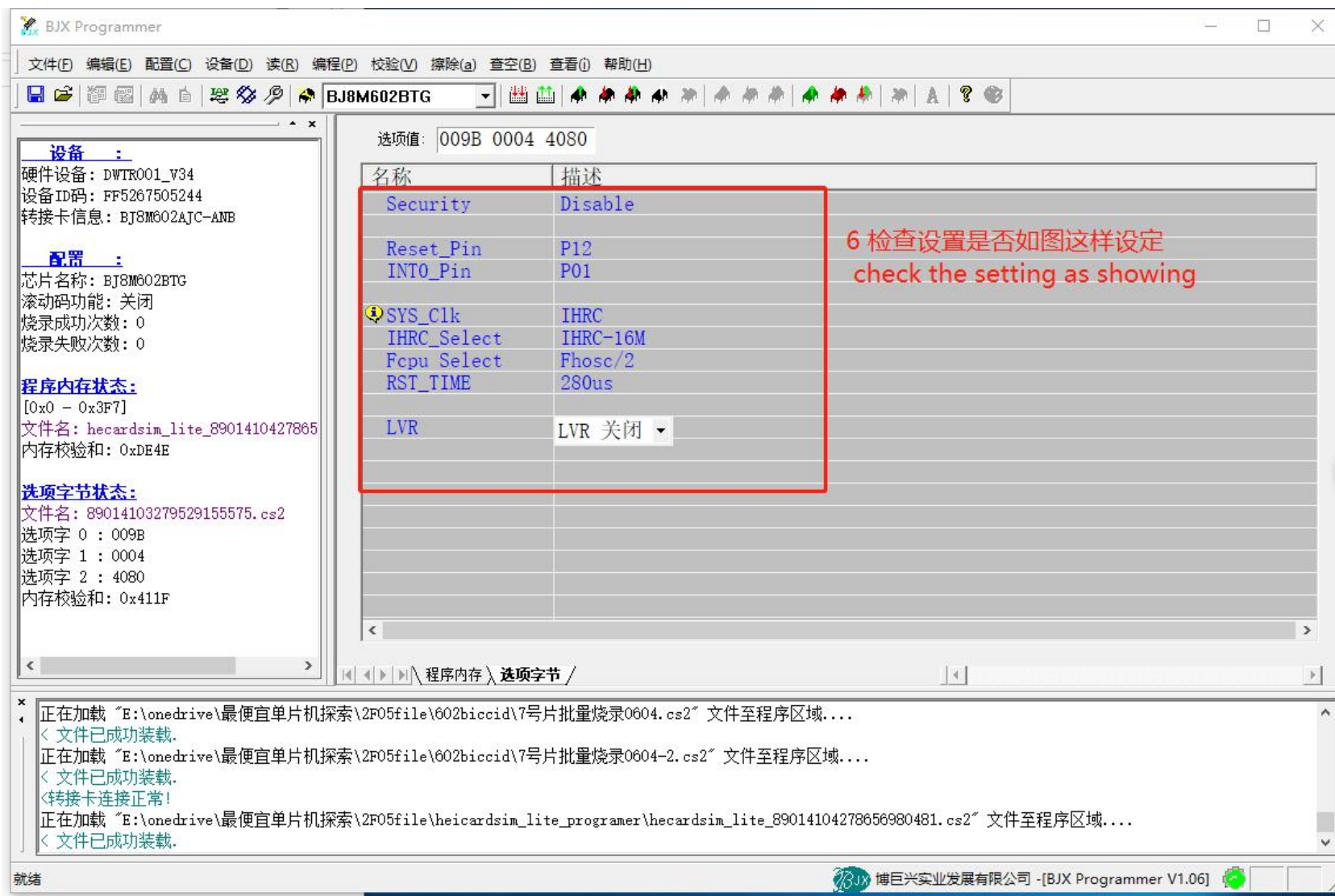
- 1 install the BJXP.exe 安装编程器配套软件工具
- 2run BJXP 运行软件
- 3connect pc usb to the programer 使用 usb 线缆连接到 PC
- 4load the firmware of the chip 加载卡贴芯片的最新固件
- 5download the firmware to the programmer box 下载固件到编程器里
- 6disconnect from pc start to program 断开 usb 连接开始烧录芯片

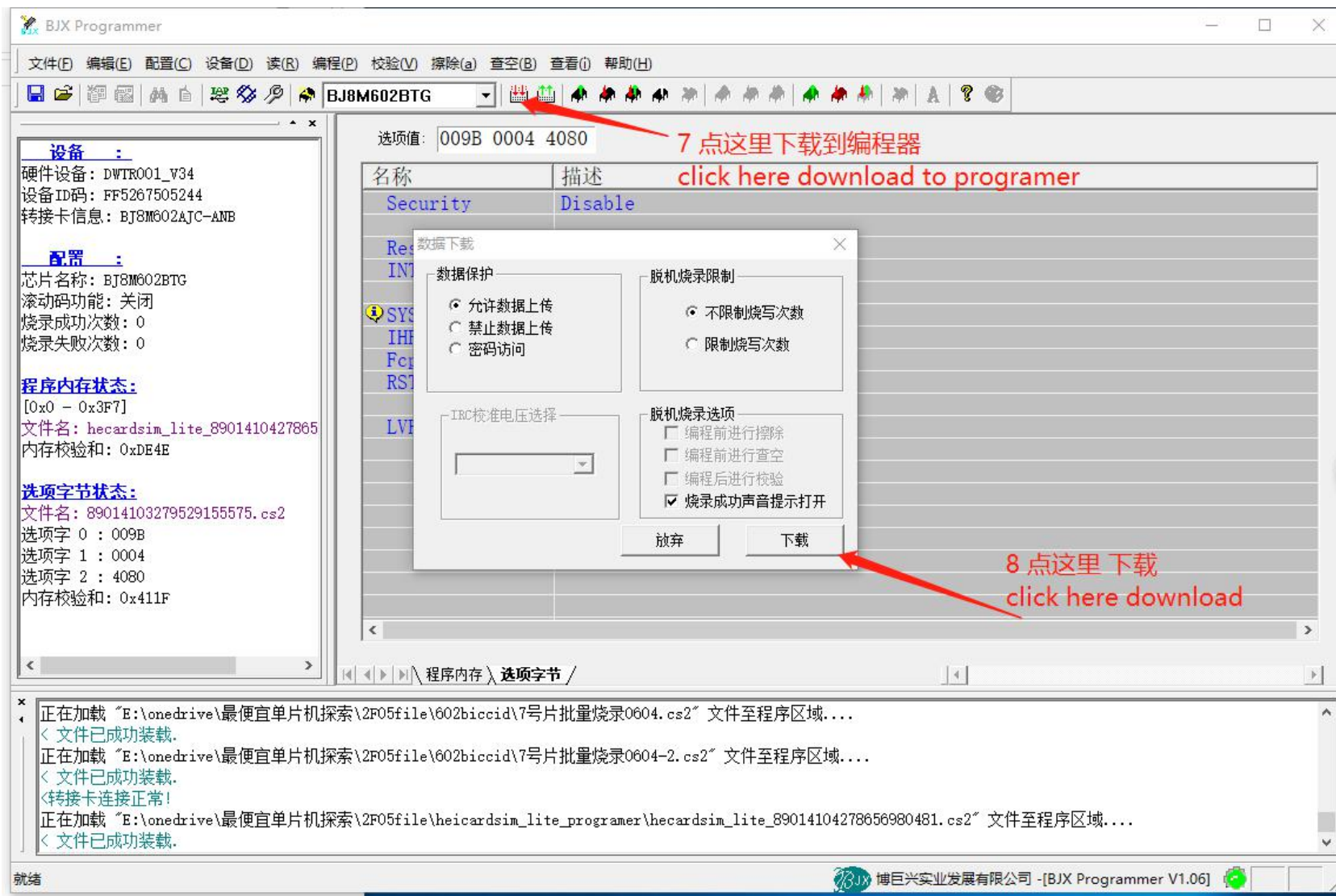
中国超雪版权所有

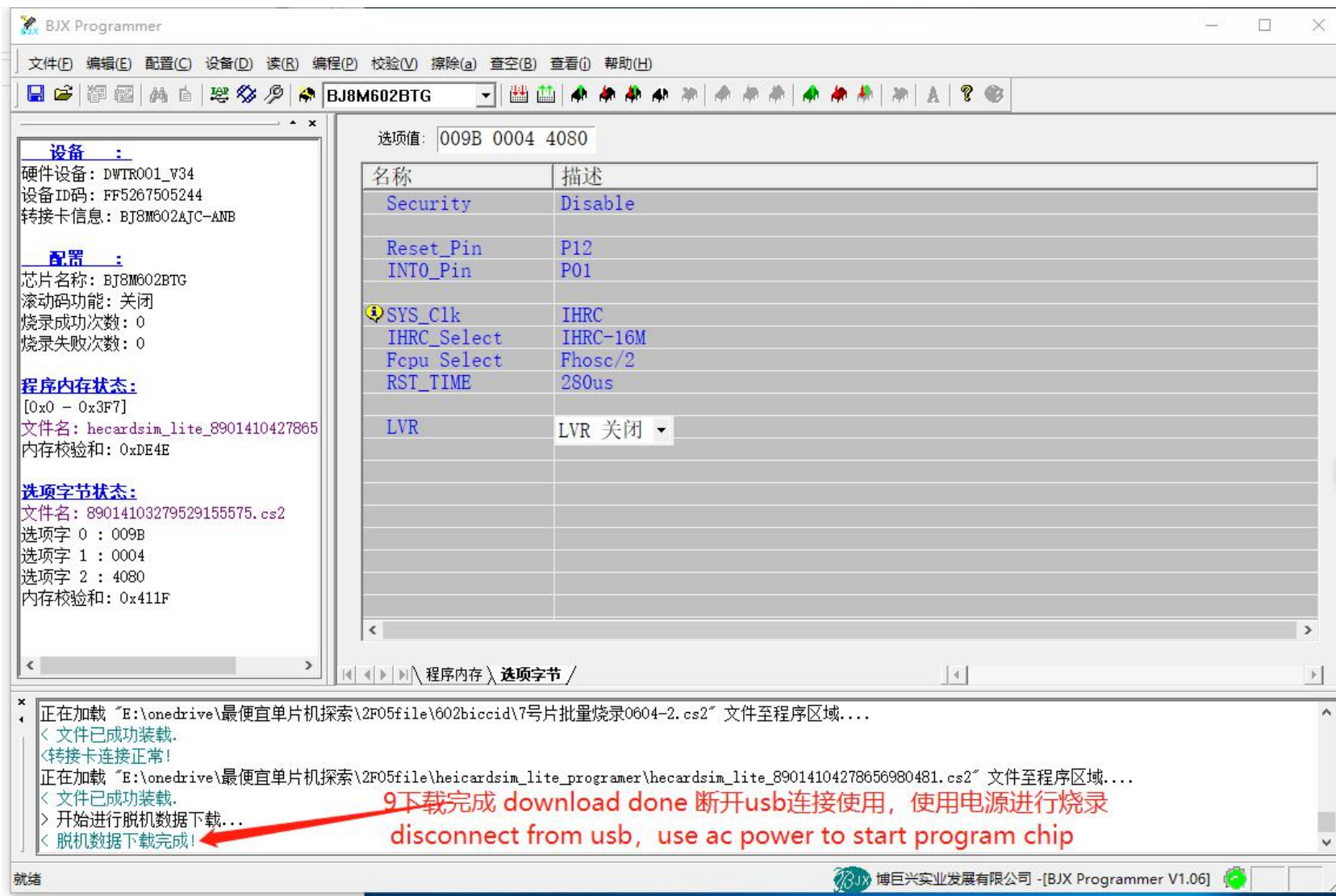


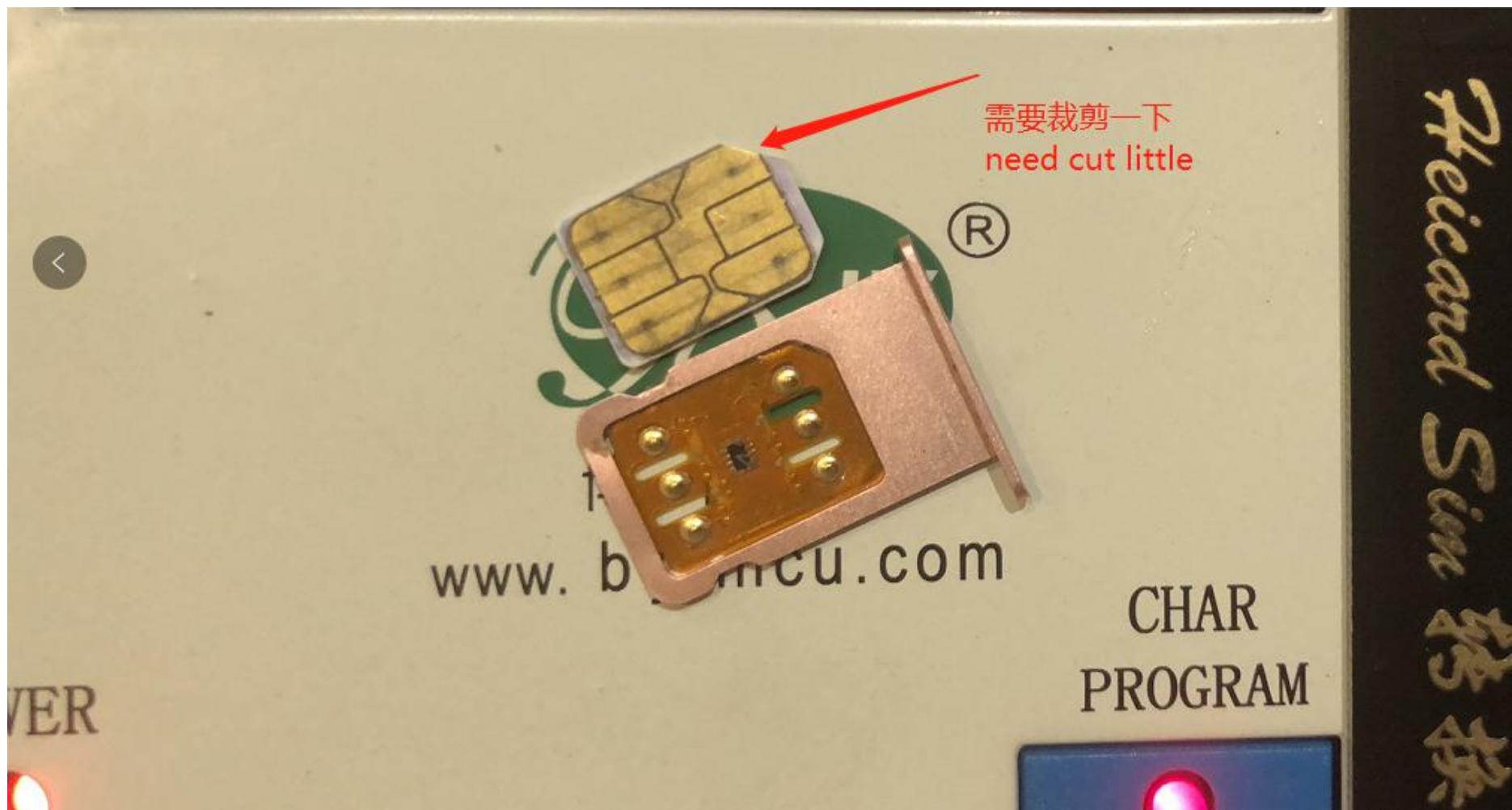












802 8.8.8.8

这样放置sim卡
put sim as this

BJX[®]

博巨

POWER

CHAR
PROGRAM

Heicard Sim 转换读卡

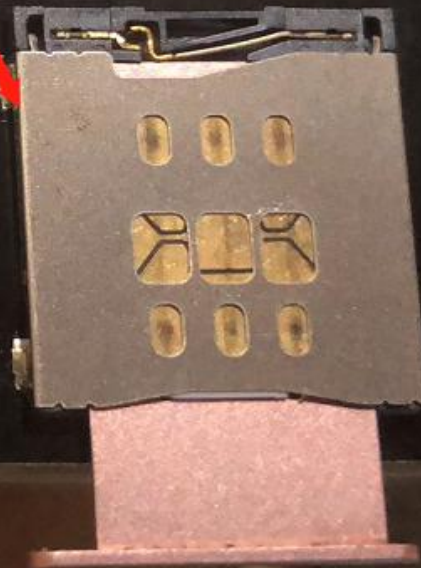
CHAR
PROGRAM



gy Co., L

im 转换读卡器

完全插入卡槽
insert to slot





这是编程中 P，20 秒左右，出现 B 一声表示 编程成功，可以取出 sim 卡，换下一个进行更新
This P meaning programing, about 20 seconds will B 1 time, program done!



如果出现编程失败 滴滴滴三声, 说明连接不可靠或者编程器需要复位, 请按这个复位按钮进行复位

If flash fault, bbb 3 times, please try click reset button, and try again, maybe the chip connect not good, try insert the sim again.